



CONCRETE DISTRIBUTORS with HYDRAULIC BOOM

B Series

B 308
B 212
B 312
B 15
B 17
B 18
B 21



User Friendly



Remote
Control

Ultra Light design hydraulic placing booms are made of High Strength Steel which provides long life, light weight and practical use. Distribution area / weight-feet clearance rates are unbeatable. Optimization in the design is to maximize the practicability. Therefore the users describe the equipment as "job-site friendly equipment".

Heavy-Duty Slew Gear

All Atabey B-Series concrete placers has heavy-duty slew gears integral with reducer gear-box. The system is much more reliable as compared to generally used worm-gear reducers. Although worm gear reducers are sufficiently strong against pre-determined loads, they are weak against small accidental hits of the boom end. (that can somehow happen in construction job-sites)



Modular Construction With Detachable Boom Unit

Single-pin split-frame system; easy to handle and transport; user-friendly solution for tower crane capacity limitations.



B Series / General Features



Emergency Hand Pump

Emergency hand pumps are standard on all Atabey B-Series placing booms never stop concrete pouring; even in case of power cut, concrete placing can be finished by manual hand pump. No "cold-joints" with Atabey placers.

Infinite Rotation System With Slip-Ring Mechanism

There is no any limit of turning during operation. One of the considerations during positioning of conventional spider booms is to plan starting angle position in convenience with pouring steps. Even if the spider boom has 360° total slew turnability, that is not perfect. People frequently try to push further with end-hose at the slew turn limits in order not to wait for a complete reverse turn. With Atabey, there is no such a limit: easy, friendly operation.



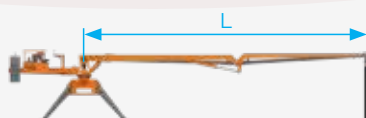
Ballast Boxes

Easy start up with Atabey placing booms. Readymade ballast forms supplied with the equipment. No need to construct formwork etc. to obtain ballast weights. It is as easy task as filling the boxes with concrete only!



Model Names With Respect to "Horizontal Reach" Values

2 Element Model



| Model | L |
|-------|------|
| B 212 | 12 m |

3 Element Models



| Model | L |
|-------|------|
| B 308 | 8 m |
| B 312 | 12 m |
| B 15 | 15 m |
| B 17 | 17 m |
| B 18 | 18 m |
| B 21 | 21 m |

2 - Element Placing Boom Model

B 212 / Technical Details & Dimensions & Weights



Assembled Unit
(Without Ballast)



Main Frame



Detached Boom



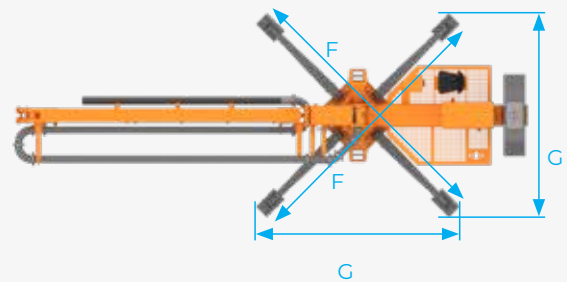
Ballasts



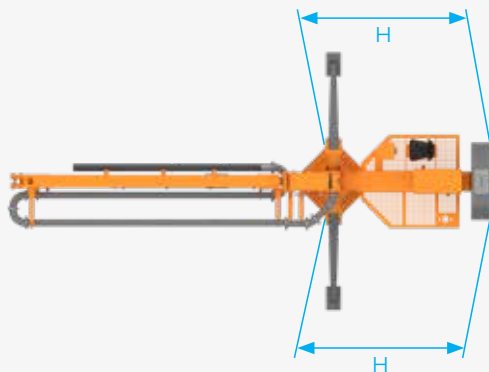
Outriggers



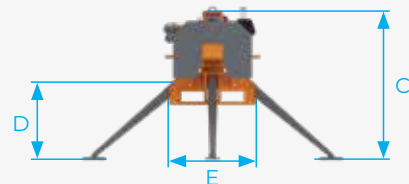
Side View



Top View



Top View



Rear View

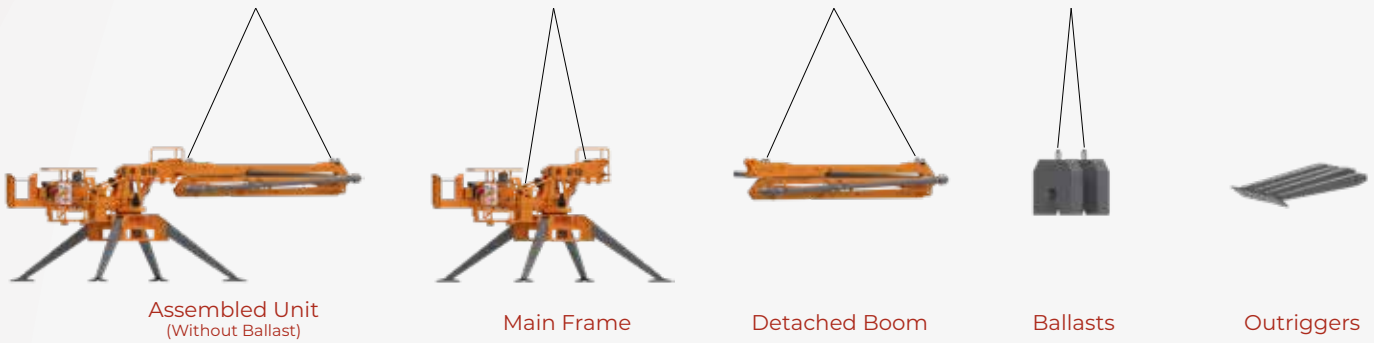
| Model | B 212 |
|-------|---------|
| A | 9774 mm |
| B | 2958 mm |
| C | 1878 mm |
| D | 1613 mm |
| E | 1455 mm |
| F | 5187 mm |
| G | 3859 mm |
| H | 3284 mm |

| Model | B 212 |
|---------------------------------------|---------|
| Frame Weight | 1310 kg |
| Detached Boom Weight | 900 kg |
| Machine Weight (Main Frame + Boom) | 2210 kg |
| Ballast Weight | 1260 kg |

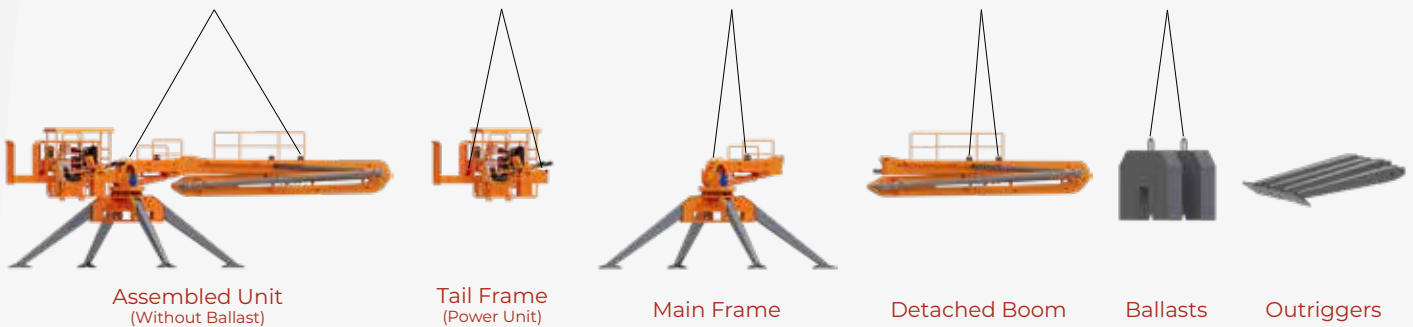
| Model | B 212 |
|-------------------------|-------------------------------|
| Distribution Diameter | 24 m |
| Distribution Area | 452 m ² |
| 1. Boom Length | 6475 mm |
| 2. Boom Length | 5525 mm |
| End Hose Length | 3 m |
| Hydraulic Pump Engine | 3 kW 3 Phase 380-400 V. |
| Hydraulic Tank Capacity | 60 liter |
| Maximum System Pressure | 200 bar |
| Folded Transport Length | 9900 mm |
| Folded Transport Width | 2000 mm |
| Folded Transport Height | 2800 mm |

3 - Element Placing Boom Models

B 308, B 312, B 15, B 17, B 18 / Technical Details & Weights



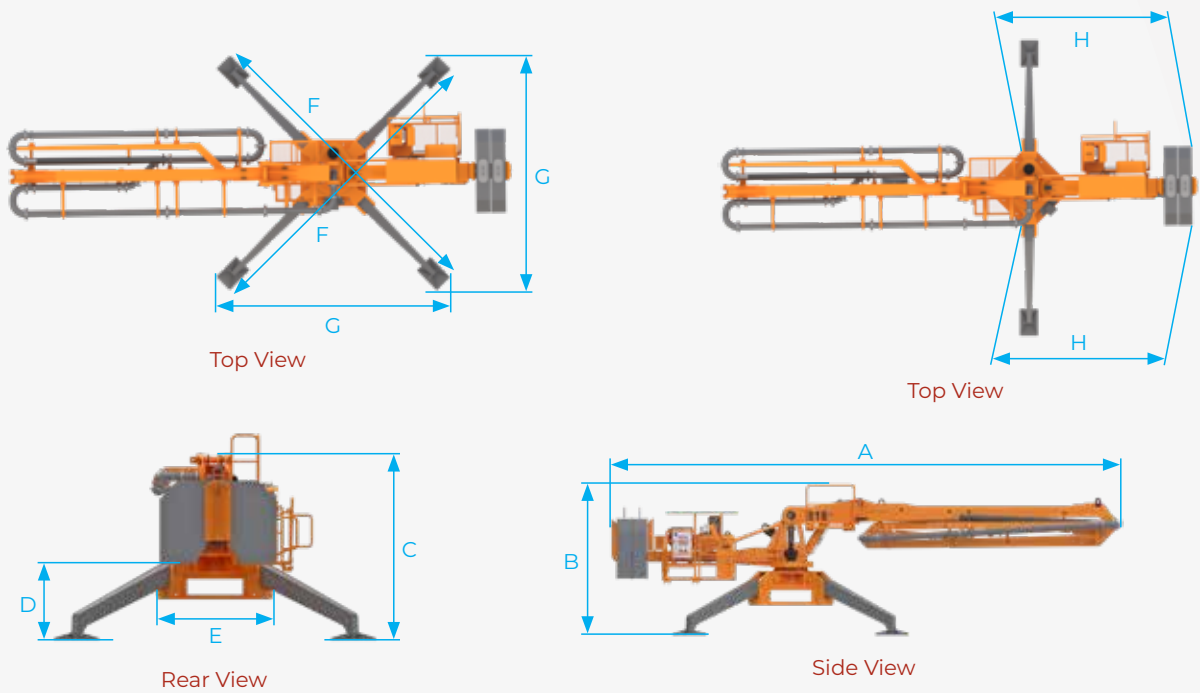
B 21 / Technical Details & Weights



| Models | B 308 | B 312 | B 15 | B 17 | B 18 | B 21 |
|------------------------------------|----------------|----------------------|-----------------------|-----------------------|-----------------------|-----------------------|
| Frame Weight | Non-detachable | 1330 kg | 1800 kg | 1980 kg | 2060 kg | 2500 kg |
| Tail Frame Weight | ----- | ----- | ----- | ----- | ----- | 1000 kg |
| Detached Boom Weight | Non-detachable | 1030 kg | 1230 kg | 1540 kg | 1540 kg | 1700 kg |
| Machine Weight (Main Frame + Boom) | 1800 kg | 2360 kg | 3030 kg | 3520 kg | 3600 kg | 5200 kg |
| Ballast Weight | 800 kg | 1500 kg (2 x 750 kg) | 2000 kg (2 x 1000 kg) | 2600 kg (2 x 1300 kg) | 2700 kg (2 x 1350 kg) | 3500 kg (2 x 1750 kg) |

| Models | B 308 | B 312 | B 15 | B 17 | B 18 | B 21 |
|-------------------------|-------------------------------|-------------------------------|---------------------------------|---------------------------------|---------------------------------|---------------------------------|
| Distribution Diameter | 16 m | 24 m | 30 m | 35 m | 36 m | 42 m |
| Distribution Area | 201 m ² | 460 m ² | 730 m ² | 962 m ² | 1020 m ² | 1358 m ² |
| 1. Boom Length | 3300 mm | 4665 mm | 5640 mm | 6432 mm | 7360 mm | 8000 mm |
| 2. Boom Length | 2500 mm | 3718 mm | 4700 mm | 5503 mm | 5503 mm | 6500 mm |
| 3. Boom Length | 2200 mm | 3178 mm | 4700 mm | 5237 mm | 5237 mm | 6145 mm |
| End Hose Length | 3 m | 3 m | 3 m | 3 m | 3 m | 3 m |
| Hydraulic Pump Drive | 3 kW 3 Phase 380-400 V. | 3 kW 3 Phase 380-400 V. | 5.5 kW 3 Phase 380-400 V. | 7.5 kW 3 Phase 380-400 V. | 7.5 kW 3 Phase 380-400 V. | 7.5 kW 3 Phase 380-400 V. |
| Hydraulic Tank Capacity | 60 liter | 60 liter | 60 liter | 80 liter | 80 liter | 80 liter |
| Maximum System Pressure | 200 bar | 200 bar | 200 bar | 200 bar | 200 bar | 300 bar |
| Folded Transport Length | 5960 mm | 8100 mm | 9450 mm | 10250 mm | 11180 mm | 12250 mm |
| Folded Transport Width | 1900 mm | 2050 mm | 2000 mm | 2050 mm | 2050 mm | 2250 mm |
| Folded Transport Height | 1700 mm | 2800 mm | 3220 mm | 3300 mm | 3300 mm | 3650 mm |

B 308, B 312, B 15, B 17, B 18, B 21 / Dimensions

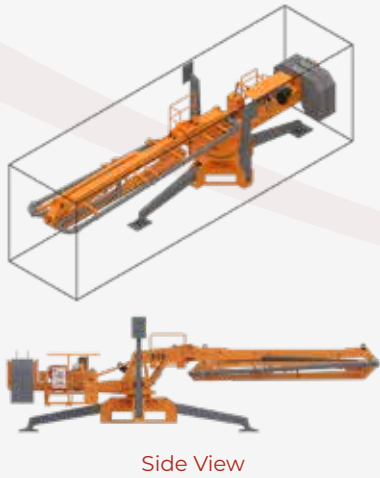


| Models | B 308 | B 312 | B 15 | B 17 | B 18 | B 21 |
|--------|---------|---------|---------|----------|----------|----------|
| A | 5960 mm | 8016 mm | 9365 mm | 10130 mm | 10760 mm | 12250 mm |
| B | 2400 mm | 2958 mm | 3289 mm | 3428 mm | 3428 mm | 3810 mm |
| C | 1710 mm | 1878 mm | 2359 mm | 2346 mm | 2346 mm | 2450 mm |
| D | 1050 mm | 1613 mm | 1750 mm | 1500 mm | 1500 mm | 2060 mm |
| E | 1730 mm | 1455 mm | 1684 mm | 1793 mm | 1793 mm | 2025 mm |
| F | 3310 mm | 5187 mm | 6142 mm | 6590 mm | 6590 mm | 7190 mm |
| G | 2350 mm | 3859 mm | 4616 mm | 4908 mm | 4908 mm | 5090 mm |
| H | 2360 mm | 3273 mm | 3398 mm | 3499 mm | 3598 mm | 3800 mm |

Shipping Dimensions

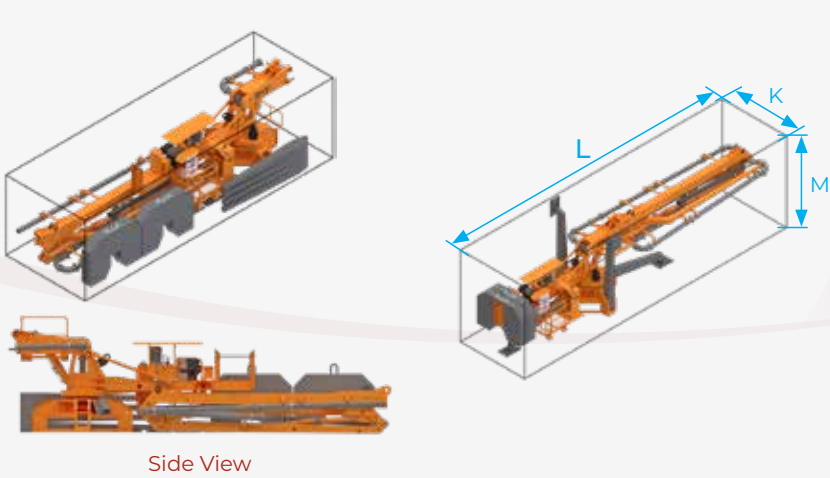
Alternative - 1

Assembled Unit (With Empty Ballast Boxes)



Alternative - 2

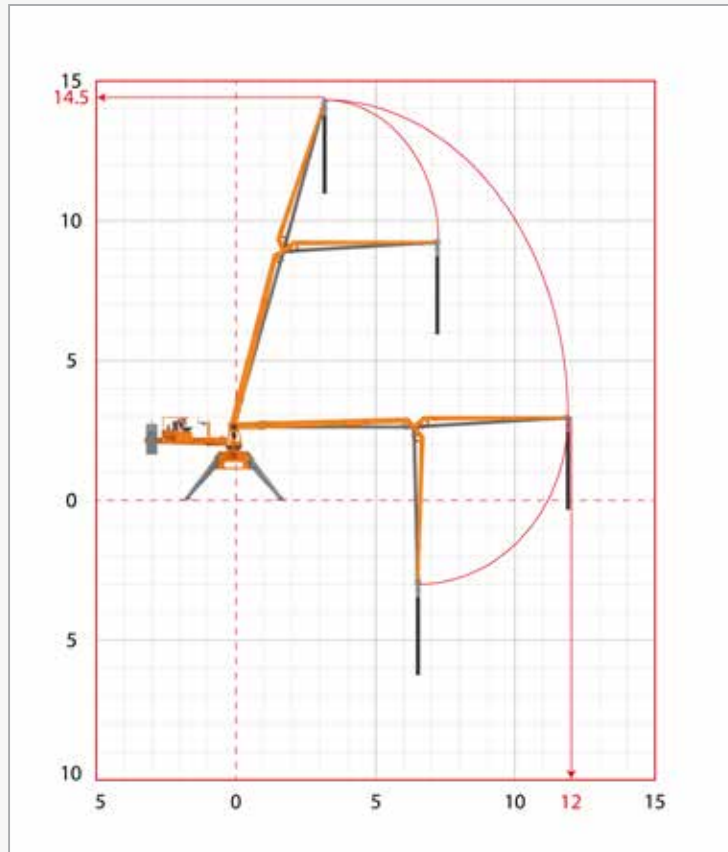
Shipping B 18 As The Boom Unit Is Detached (With Empty Ballast Boxes)



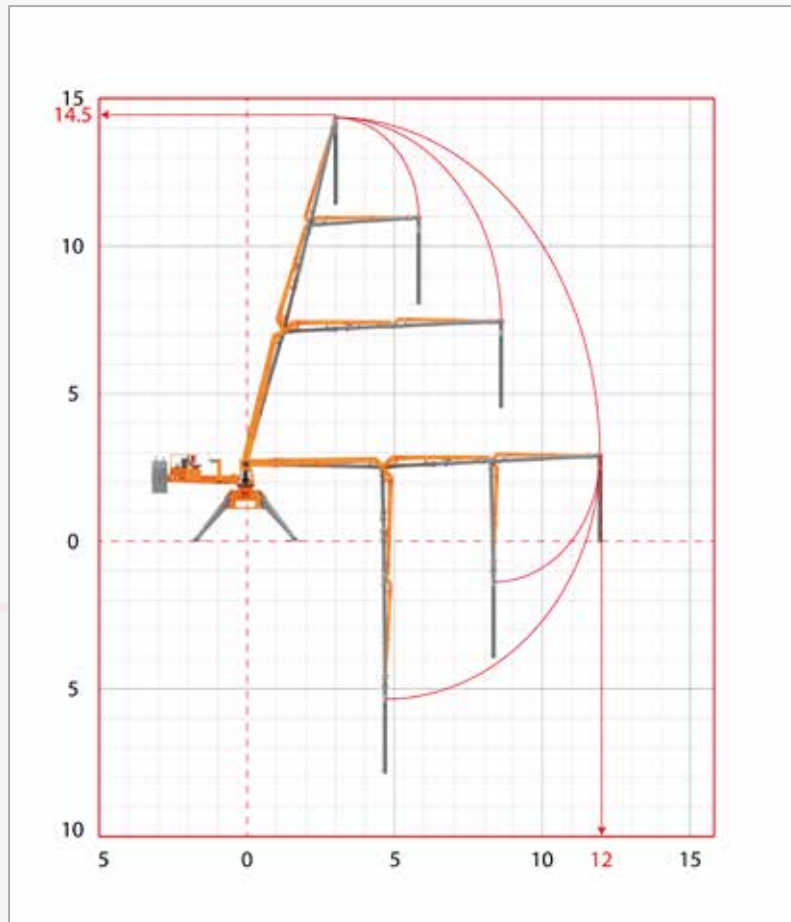
| Models | B 308 | B 212 | B 312 | B 15 | B 17 | B 18 | B 21 |
|--------|---------|---------|---------|---------|----------|----------|----------|
| K | 1750 mm | 2000 mm | 2050 mm | 2000 mm | 2050 mm | 2050 mm | 2400 mm |
| L | 6000 mm | 9900 mm | 8100 mm | 9450 mm | 10250 mm | 10900 mm | 11800 mm |
| M | 2450 mm | 2800 mm | 2800 mm | 3220 mm | 3300 mm | 3300 mm | 3400 mm |

B 212, B 312 / Boom Reach Diagrams

B 212

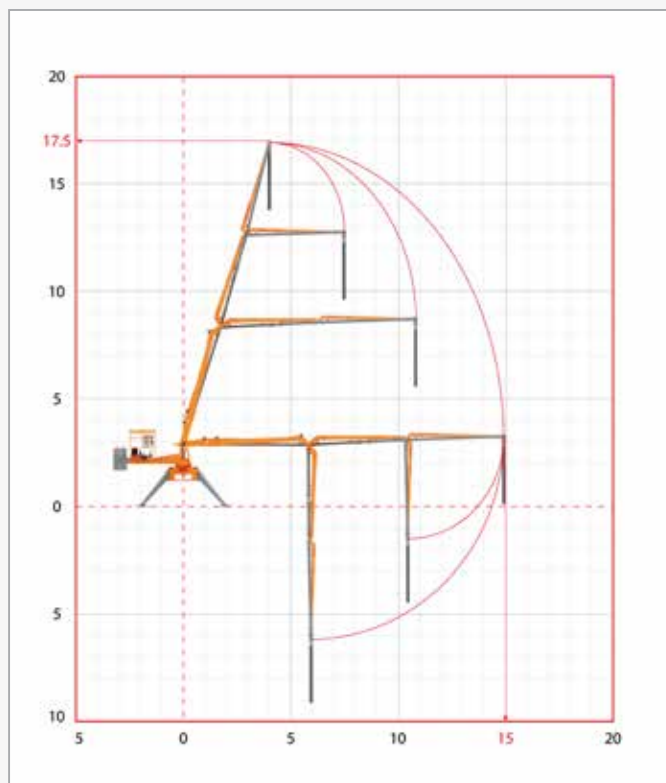


B 312

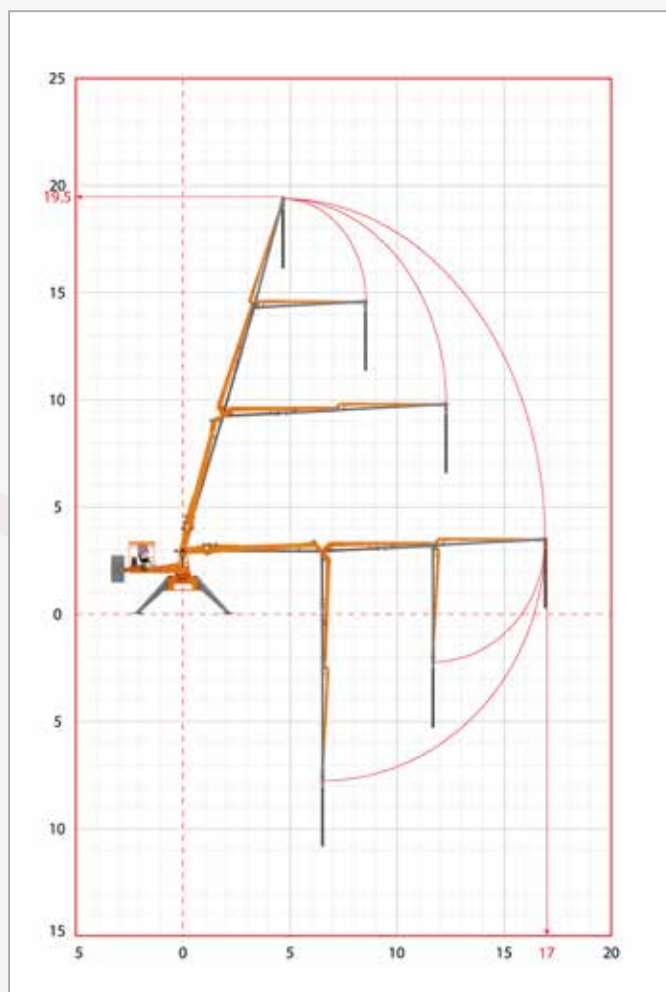


B 15, B 17 / Boom Reach Diagrams

B 15

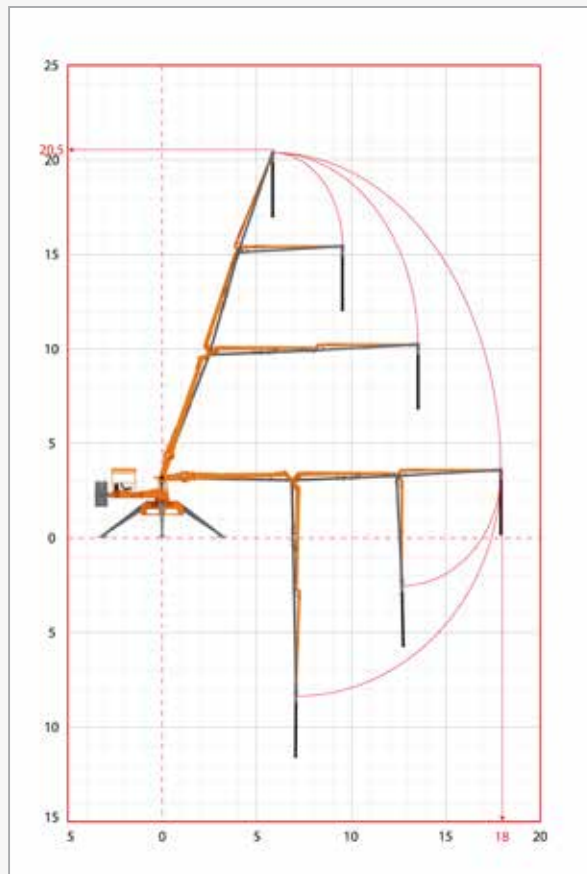


B 17

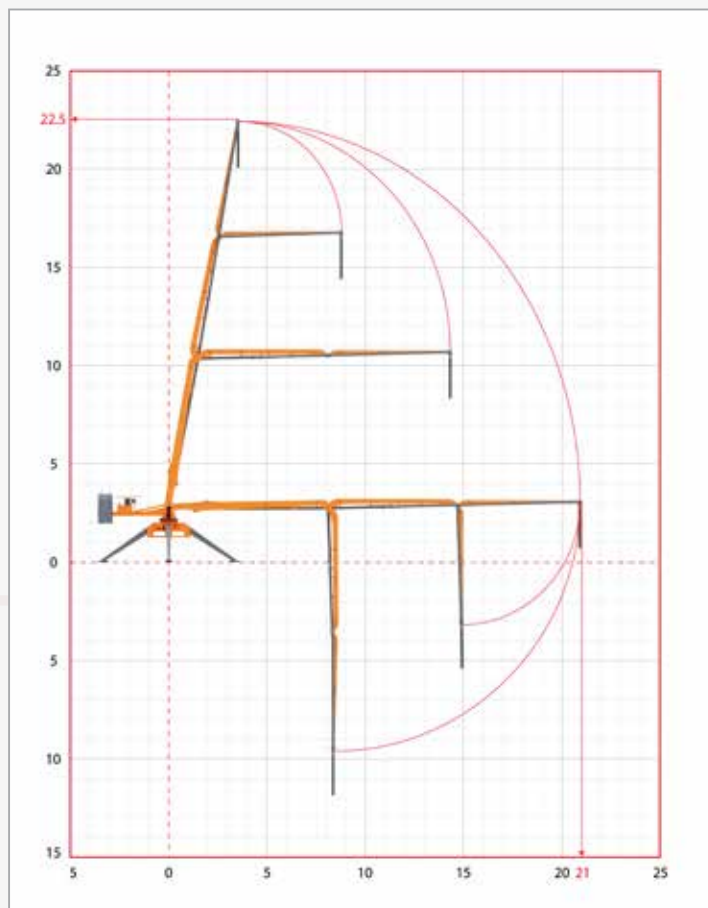


B 18, B 21 / Boom Reach Diagrams

B 18



B 21



B Series / 4-Wheel Carriage Options

- With or without traction
- Hydraulic outriggers
- Remote control for self-travel & steering



K₁ - B 308, Striker

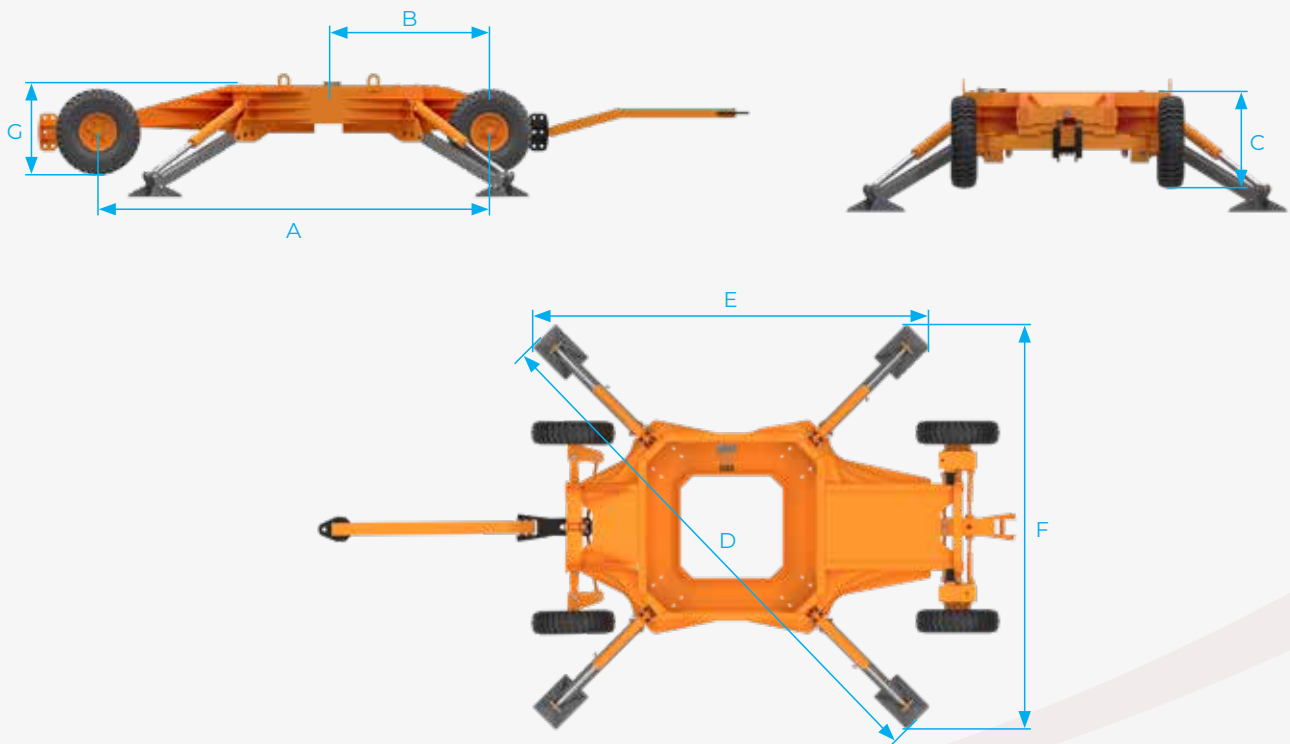
K₂ - B 212, B 312

K₃ - B 15, B 17, B 18

K₄ - B21



B Series / 4-Wheel Carriage Options



| Models | A | B | C | D | E | F | G | K | KW ₂ | KW ₄ |
|----------------|---------|---------|--------|--------------------|--------------------|--------------------|--------------------|---------|--------------------------------|-----------------------------------|
| K ₁ | 3820 mm | 2297 mm | 828 mm | 5030 mm | 3897 mm | 3168 mm | 1159 mm | 1200 kg | 1285 kg | 1365 kg |
| K ₂ | 3780 mm | 2327 mm | 930 mm | 4978 mm | 3878 mm | 3139 mm | 1159 mm | 1950 kg | 2050 kg | 2130 kg |
| K ₃ | 4128 mm | 2431 mm | 910 mm | 5885 mm | 4419 mm | 3881 mm | 1180 mm | 2250 kg | 2360 kg | 2480 kg |
| K ₄ | 4705 mm | 2720 mm | 910 mm | 5730 mm 6617 mm | 4321 mm 4887 mm | 3767 mm 4400 mm | 1180 mm 1180 mm | 2550 kg | 2670 kg Short Outriggers | 2790 kg Standard Outriggers |

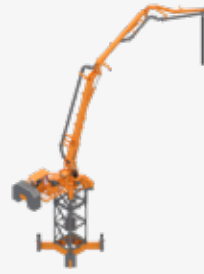
B Series / Elevation Tower Options



Standart Outriggers
(Freestanding)



Short-Outriggers with
Ballast Weights
(Freestanding)



Tower Base
Anchored to Deck
(Anchored)

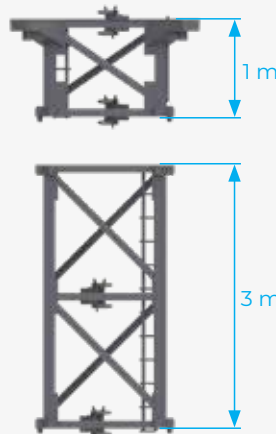
Connection Outriggers To Tower Upper Frame



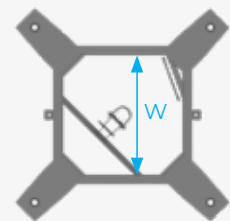
Set Of Connection
Outriggers (4 PCS)

Despite their lighter weights, Atabey “B-Series Spider Booms” have robust structure and long lasting operational life. The “heavy-duty slew gear” is standard on all models.

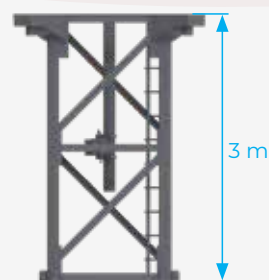
Seperate Column Unit-Upper Frame



$W_1: 1\text{ m}$
 $W_2: 1.4\text{ m}$



Combined Column Unit-Upper Frame

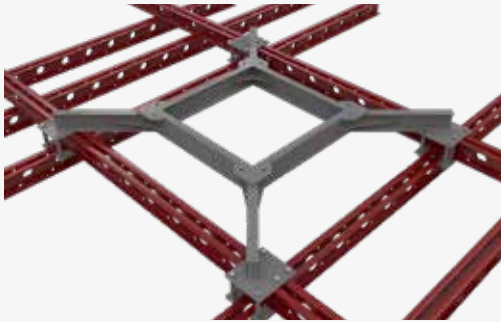


B Series / Lower Frame Options

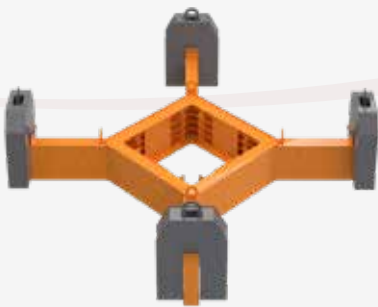
Base Frame Unit With Standard Outriggers



Base-Frame For Slip-Form Rig Connection



Base Frame With Short Outrigger And Ballasts



B Series / Accessories



Hydraulic Diversion Valves
(with hand pump and/or
external hydraulic line connection)



Power Packs for Diversion Valves
(electric or diesel driven)

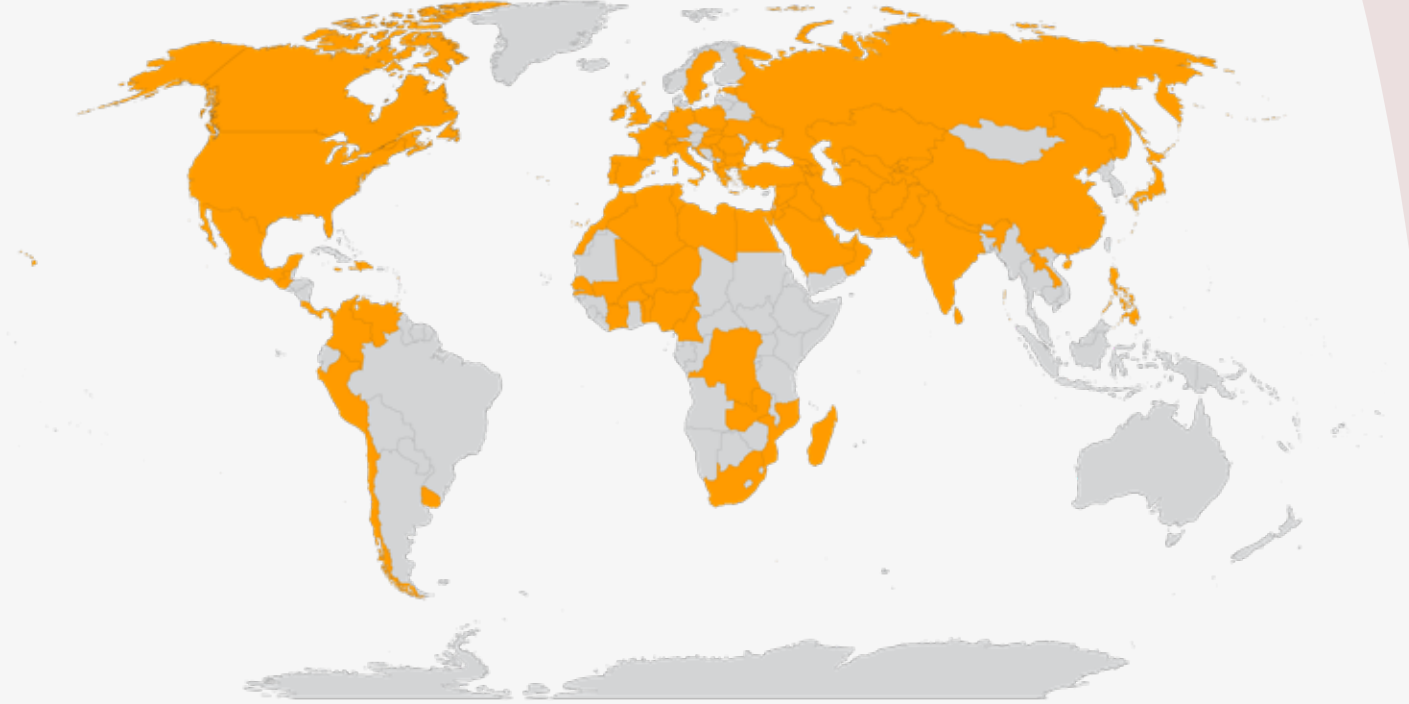


Pipeline Scissors
(slip-form pipeline connection)





Atabey; Common language of concrete
placer's in more than 80 countries



/AtabeyBetonMakinalari



/atabeyconstructionequipment



atabey construction equipment



ATABEY CONSTRUCTION EQUIPMENT

Address: Keresteciler San. Sit. 4. Cad. No: 39 Kahramankazan / Ankara - TURKEY

Phone: +90 312 441 11 33 Fax: +90 312 441 58 88

www.atabeymakina.com

sales@atabeymakina.com

